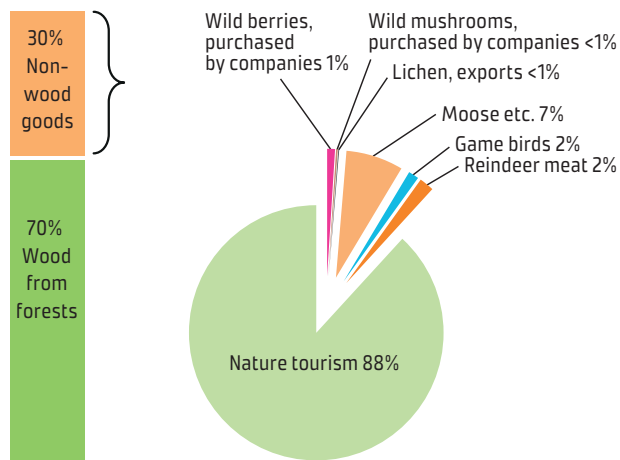


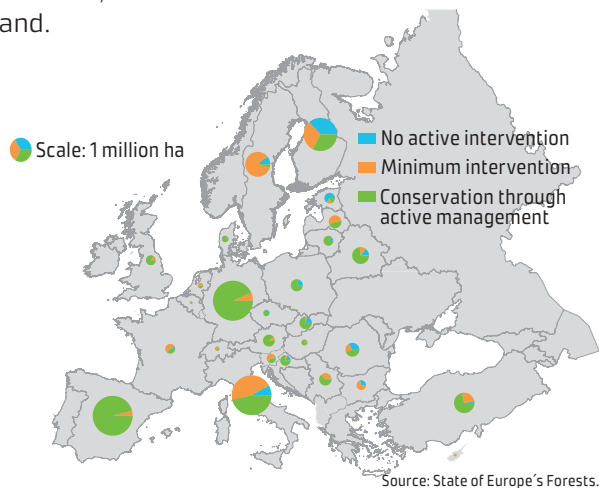
NATURE TOURISM AND NON-WOOD PRODUCTS HAVE A SHARE OF 30% FROM THE VALUE OF VARIOUS FOREST PRODUCTS

Value of non-wood forest products accounts for 6% of the total value of forest products.



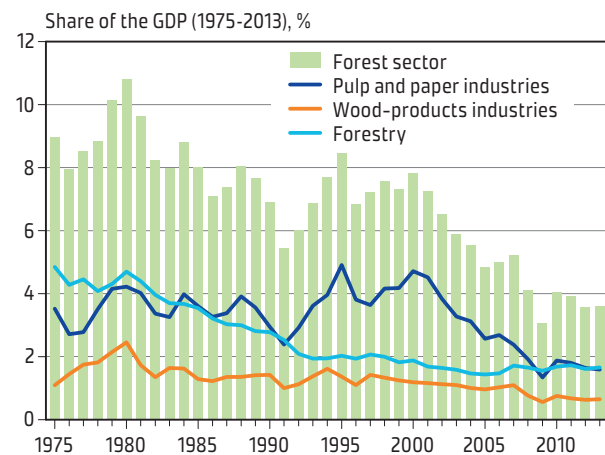
STRICTLY PROTECTED FORESTS LARGEST IN EUROPE

The area of strictly protected area accounts for 9% of Finland's total forest area. The total area of protected forests and forests under restricted use is 3 million hectares, or 13.0% of all forest land.



FOREST SECTOR CONTRIBUTES ABOUT 4% OF FINLAND'S GDP

Forest industry products account for almost 20% of Finland's total exports. The value added of the forest sector accounts for about 6,7 billion EUR.



WOOD-BASED BIOPRODUCTS WIDEN THE FUTURE DEVELOPMENT OF THE FOREST INDUSTRY

Traditional forest industry products are being joined by a wide range of new wood-based bioproducts such as fibre packages, biodiesel, composites, biopolymers, pharmaceuticals, cosmetics products.



PRINCIPAL MESSAGES

- The Finnish Government approved in 2015 the new National Forest Strategy 2015-2025 with goals 1) creating a competitive operational environment for forest business, 2) renewing the forest sector, and its structure in order to diversify forest products, 3) continuing to use forests according to the principles of sustainable forest management.
- The growing stock has increased over past 50 years by more than 40%. Over the same period, wood equivalent to the current tree volume, 2,3 billion cubic metres, has been harvested and used for forest products.
- To safeguard biological diversity, close to nature management, by leaving dead wood and protecting key habitats have been undertaken in commercial forests. The area of protected forests has been tripled over the past 40 years, being now nearly 3 million hectares (13.0 % of the forest area).
- Finland's forests are carbon sink, removing annually carbon dioxide from the atmosphere about 30 million. This amount compensated 40% of the carbon emission from Finland's industry per year.
- Changing climate is estimated to increase forest growth, but the extreme weather phenomena, notably local storm and bark beetle damages will probably become more common in the future.
- Wood is expected to be more in demand in the production of renewable forest energy, biofuels, in new bioeconomy products such as clothing, fiber packages, composites, pharmaceuticals, cosmetic and in wood construction.
- The forest sector contribute 4% of the GDP of Finland, and employ about 65 000 people. Annual value added in forest is 6.7 € billion. The most important market area of Finnish forest industry products is Europe, 70% of the export of the wooden products.

SOURCE:

Statistical Yearbook of Forestry, 2014. Luke.
 Statistics Finland, 2015
 National Forest Strategy, 2015.
 Authors: Jari Parviainen and Markus Lier, Luke

www.luke.fi

PUBLISHERS:



Finland's forests 2015

Based on the Criteria and Indicators of Sustainable Forest Management

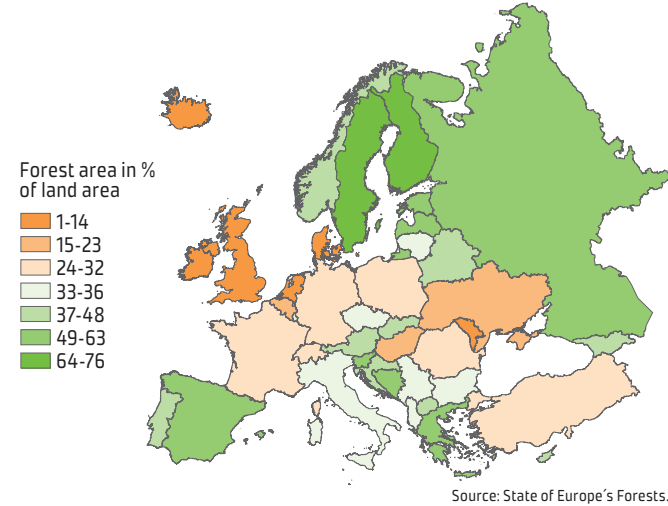
- Forest resources
- Productive functions
- Health and vitality

- Biological diversity
- Protective forests

- Socio-economic functions

FINLAND - THE MOST EXTENSIVE FOREST COVER IN EUROPE

Some 23 million hectares (76%) is under forests in Finland, representing about 11% of the forest area in Europe (210 million ha).



OVER 60% OF FORESTS ARE PRIVATELY OWNED

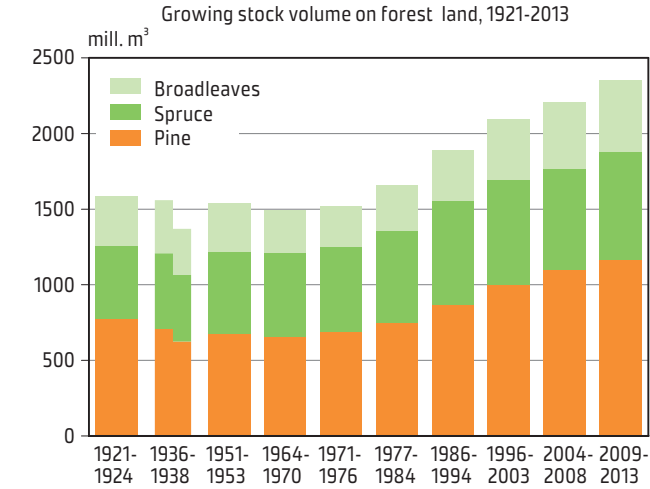
| Forest ownership category | Forest land area | Growing stock | Annual increment | Commercial roundwood removals |
|--|------------------|---------------|------------------|-------------------------------|
| Share (%) | | | | |
| Private | 60.1 | 64.7 | 72.8 | 82.1 |
| Companies | 8.2 | 8.7 | - | - |
| State | 25.4 | 20.8 | 27.2 | 17.9 |
| Other (municipalities, parishes, associations) | 5.4 | 5.7 | - | - |



Old and young generation of the family thinking on the management of their own forest property.

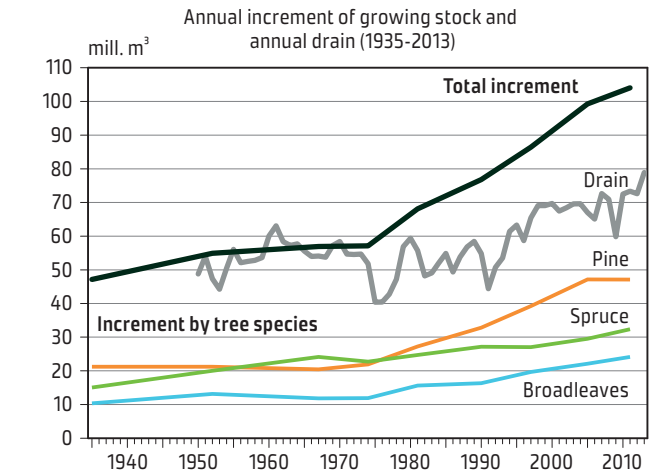
GROWING STOCK STEADILY INCREASED OVER LAST 50 YEARS

According to the latest National Forest Inventory (NFI) the volume of growing stock has increased by more than 40% since 1971, being now 2,332 million m³.



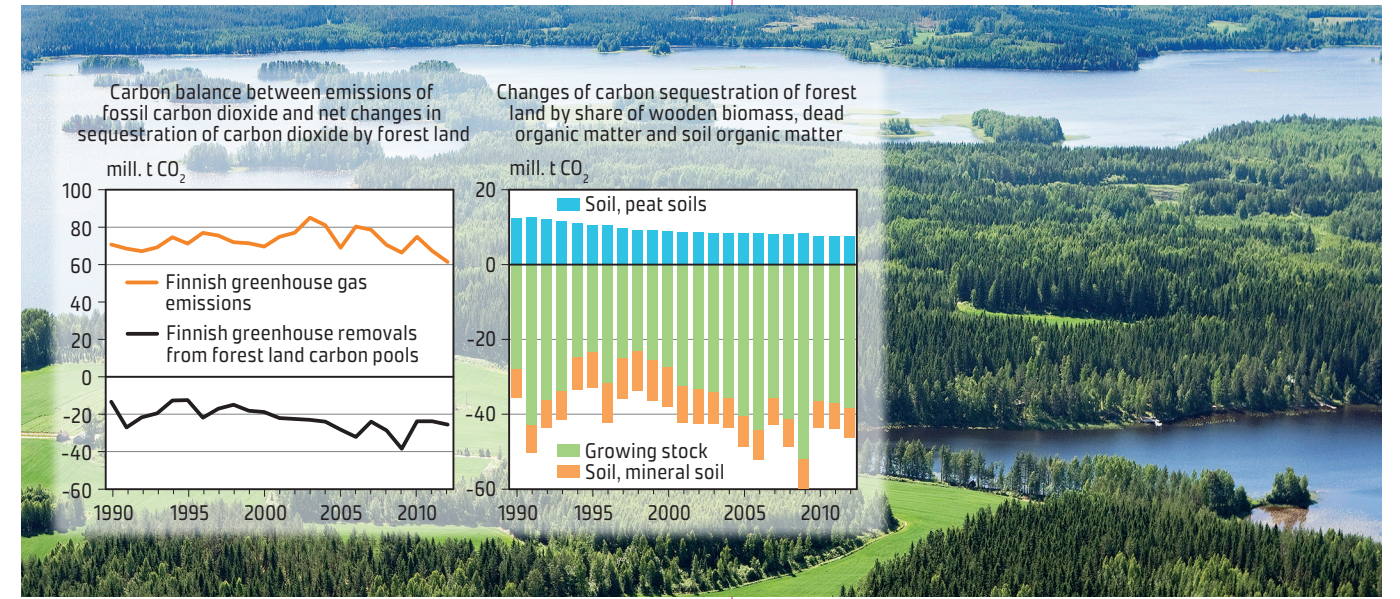
ANNUAL INCREMENT EXCEEDED THE DRAIN BY 30%

Since the mid-1970s, wood equivalent to the current volume of the tree stock, about 2,332 million m³, has been harvested and used.



FORESTS SEQUESTERATE NEARLY 40% OF THE CO₂ EMISSIONS OF FINNISH INDUSTRIES

Finland's forests are major carbon sinks, as they absorb large amount of CO₂ from the atmosphere.



WOOD AS BUILDING MATERIAL PROMOTED

In Finland, wood accounts for about 40% of all building material. 80% of the single family houses and 50% of the linked houses are made of wood as a load bearing material. The aim is to increase the construction of wooden multi-storey apartment buildings from the present share 2% until 10% before the 2020.

About 2000 m³ of wood were used to build the Metla House in Joensuu. This is equal to a storage of 1900 tons of carbon for at least 200 years.



WOOD-BASED FUELS 25% OF TOTAL ENERGY CONSUMPTION

The use of wood-based fuels has increased in Finland since the 1990s. The share of wood-based fuels of all renewable energy sources accounted for over 85%.

